

## PUNTA DE POSTE

### Características

Material	FE
Terminado	Negro
Pantalla	Pc
Indice de protección	IP65
Base (poste)	3 Pulgadas
Dimensiones mm	ø370*347 mm
Lúmenes	15,000 Lm
Temperatura	6,500K
Fotocelda	Incluida

### Parámetros Eléctricos

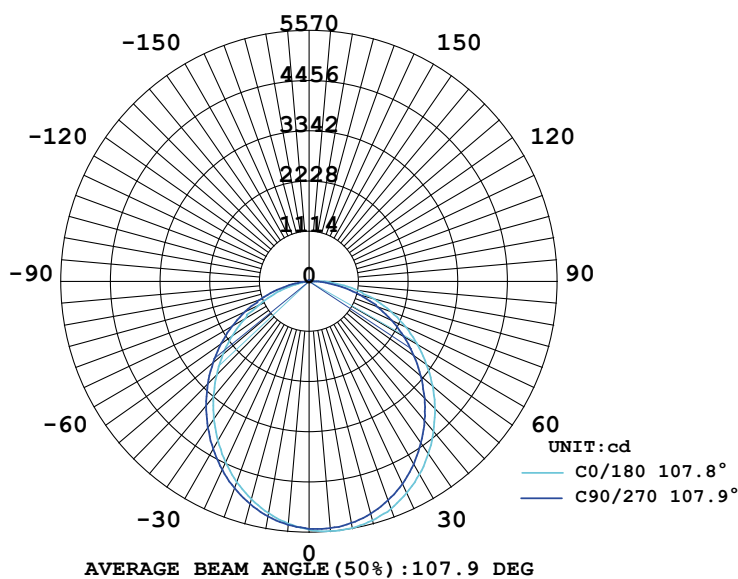
Tensión Nominal [V~]	100-277V~
Consumo de Potencia [W]	150W
Frecuencia Nominal [Hz]	50/60Hz
Consumo de Corriente [A]	1.50 - 0.54A
Temperatura de Operación	-5 a 45 °C

### Beneficios

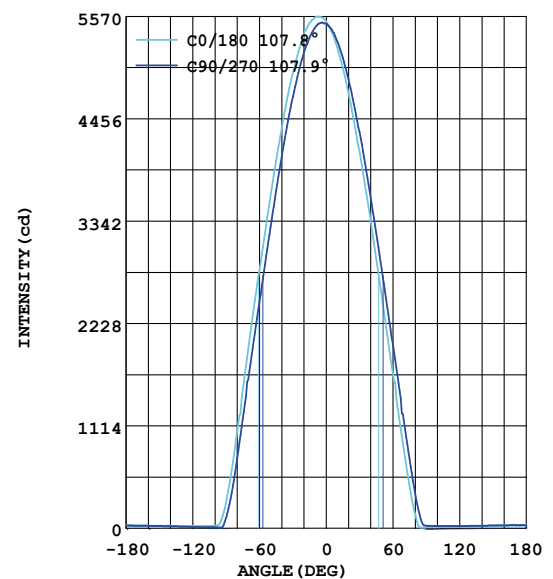
Garantía	3 Años de Garantía
Certificación	NOM ANCE

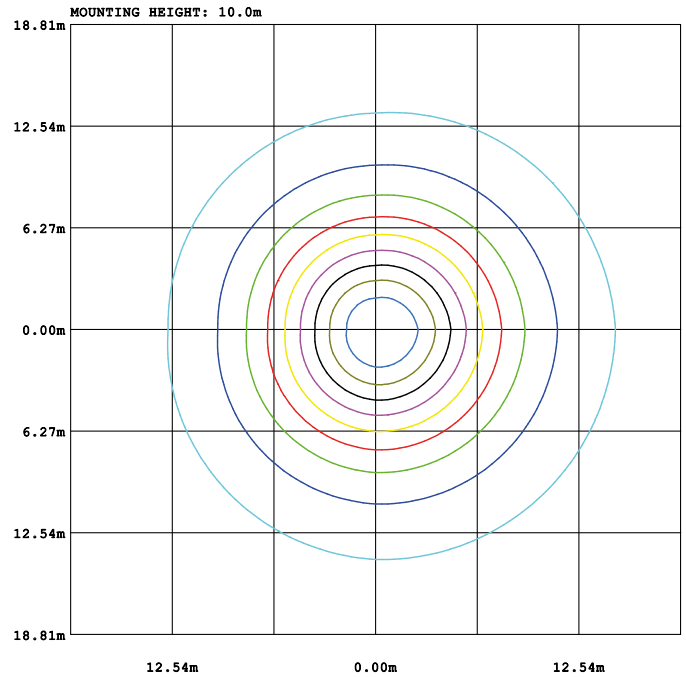
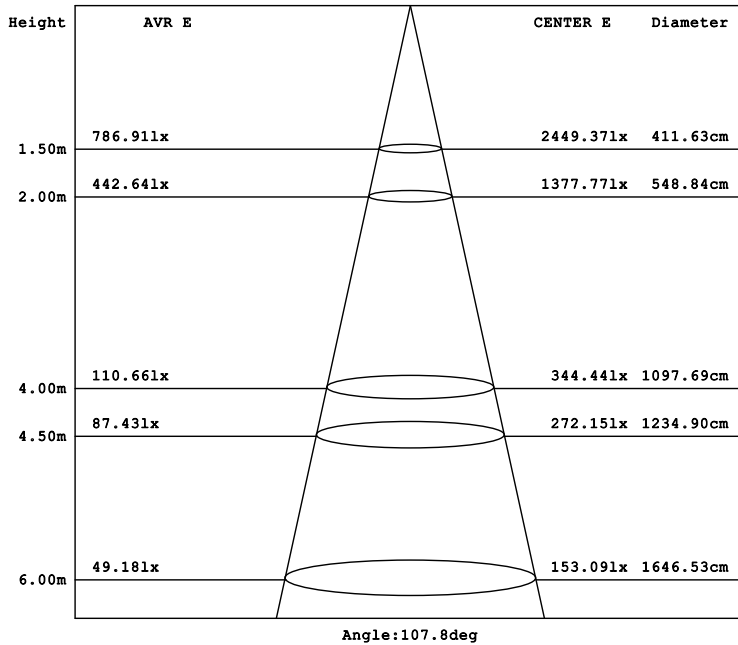


LUMINOUS INTENSITY DISTRIBUTION



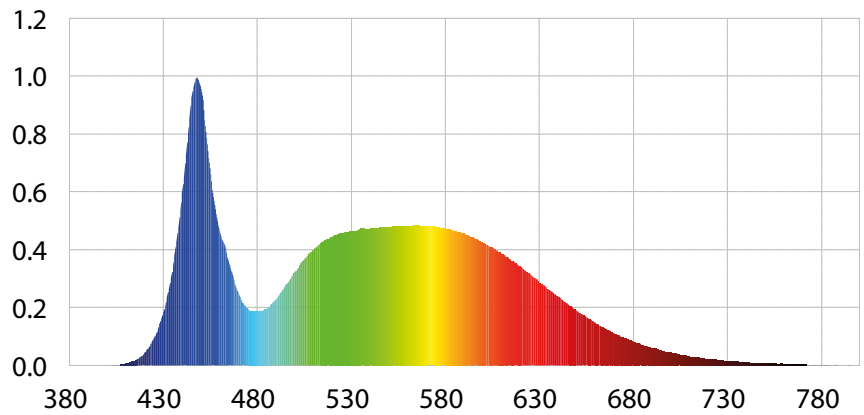
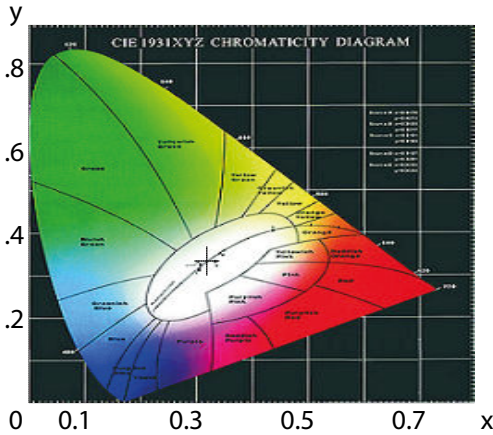
LUMINOUS INTENSITY DISTRIBUTION





- 10% 5.532lx
- 20% 11.061lx
- 30% 16.591lx
- 40% 22.121lx
- 50% 27.661lx
- 60% 33.191lx
- 70% 38.721lx
- 80% 44.251lx
- 90% 49.791lx

## CIE1931 CHROMATICITY DIAGRAM



### Parámetros colorimétricos

CCT: Tc=6044K (duv=0.00436)

CRI: Ra= 80.6, avgR(1~14)= 72.8, avgR(1~15)= 72.8

### Parámetros fotométricos

Luminous Flux: 15259.16 Lm

EEL: 0.13

Pupil Flux: 27329.79 Plm

Efficiency: 103.87 Lm/W

Energy Efficiency Class: A+ (EU 874-2012)

Pupil Lumens Per Watt: 186.04 Plm/W

Radiant Power: 48.079 W

Pupil Factor (Kp): 1.791

### Parámetros eléctricos

Voltage: 220.10V

Power Factor: 0.9810

Current: 0.6810A

Frequency: 60.00Hz

Power: 146.90W