

**DOWNLIGHT**

**Características**

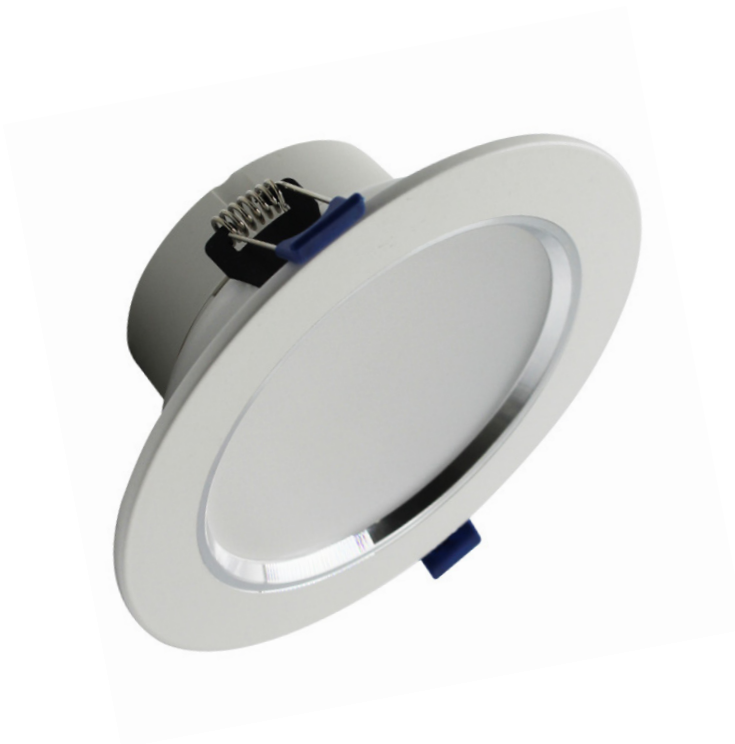
Material	AL
Terminado	Blanco con aro Satín
Pantalla	PC
Indice de protección	IP20
Base	Soporte de Fijación
Dimensiones mm	ø148*102*45 mm
Lúmenes	1,200 Lm
Temperatura	6,500K
Ángulo	120°

**Parámetros Eléctricos**

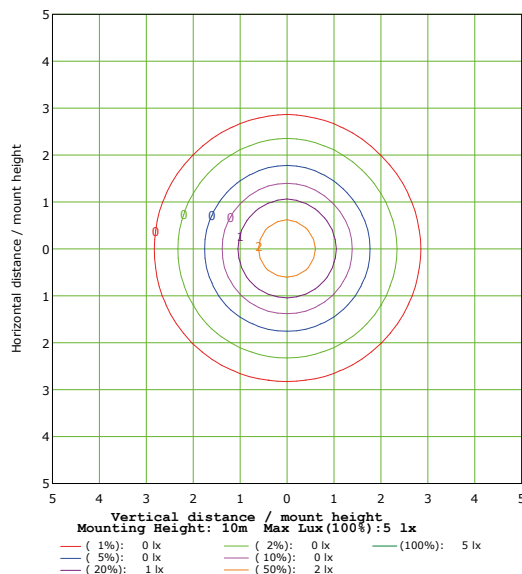
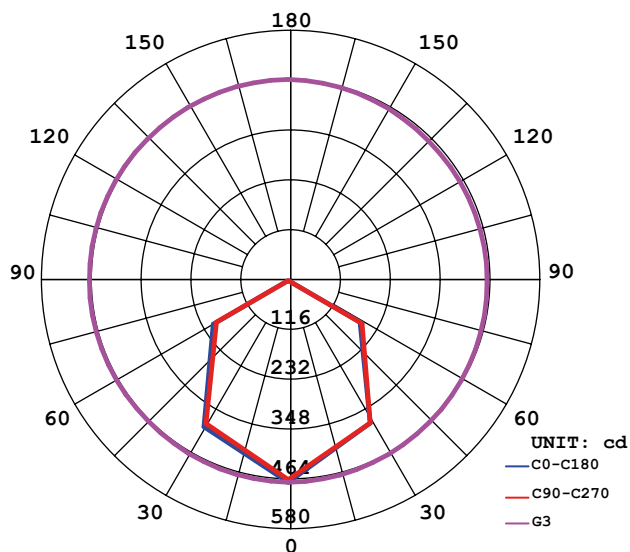
Tensión Nominal [V~]	85-265V~
Consumo de Potencia [W]	15W
Frecuencia Nominal [Hz]	50/60Hz
Consumo de Corriente [A]	0.17-0.05A
Temperatura de Operación	0 - 40 °C

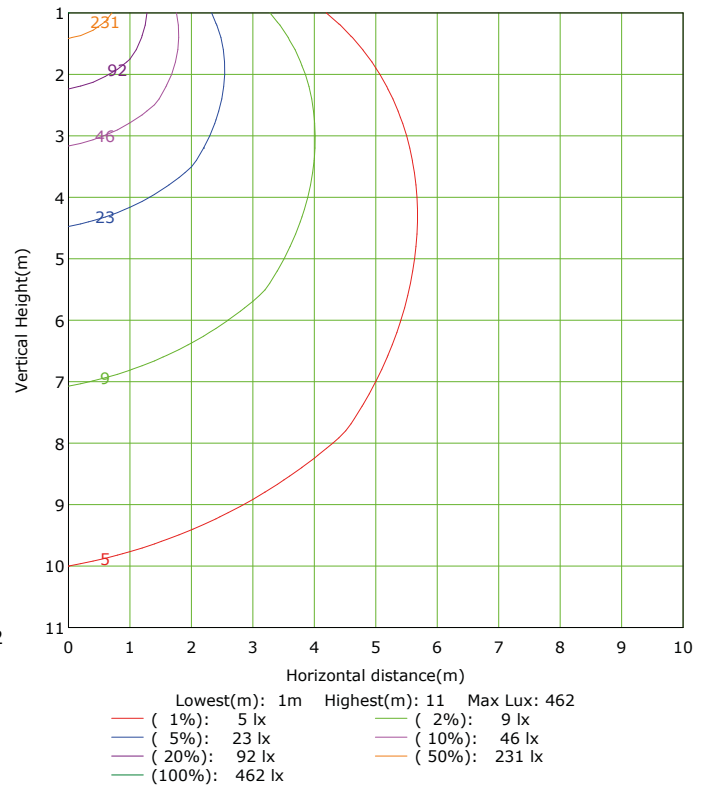
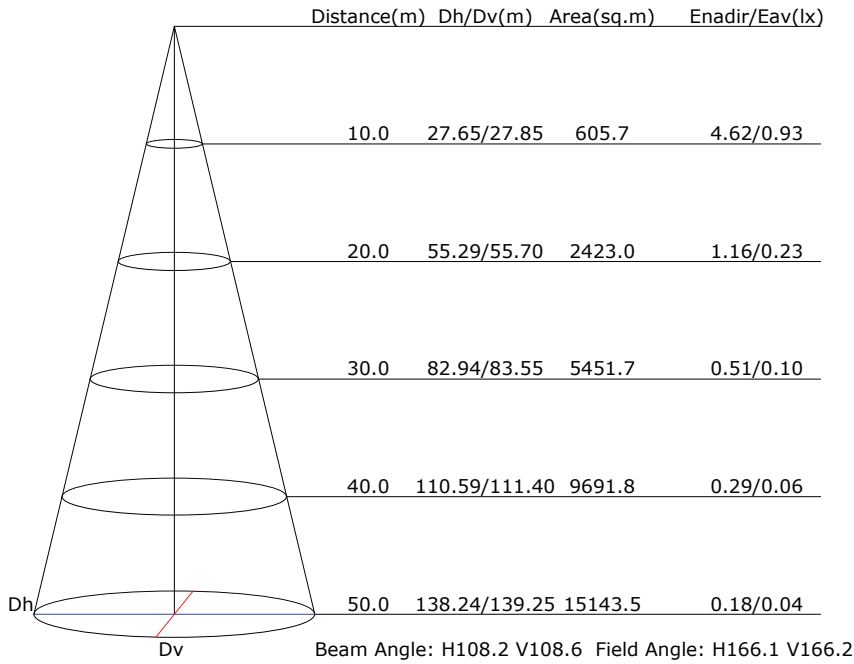
**Beneficios**

Garantía	2 Años de Garantía
Certificación	NOM ANCE

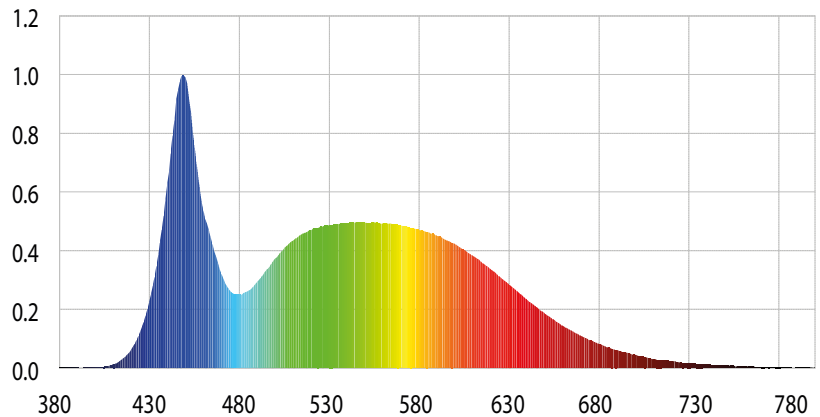
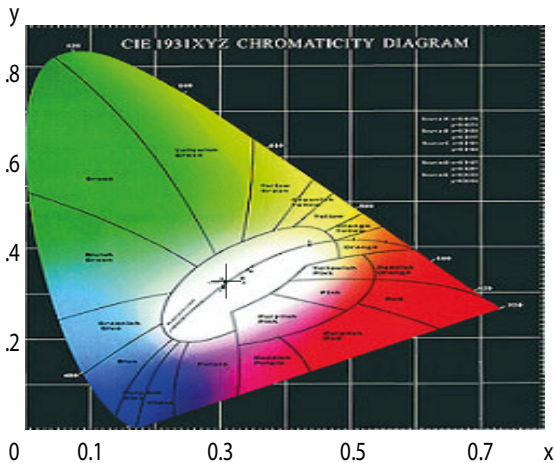


**LUMINOUS INTENSITY DISTRIBUTION DIAGRAM**





## CIE1931 CHROMATICITY DIAGRAM



### Parámetros colorimétricos

CCT: Tc=5954K (duv=0.00575)

CRI: Ra= 82.2, avgR(1~14)= 74.6, avgR(1~15)= 74.6

### Parámetros fotométricos

Luminous Flux: 1209.37 Lm

EEL: 0.17

Pupil Flux: 2278.61 Plm

Efficiency: 80.04 Lm/W

Energy Efficiency Class: A+ (EU 874-2012)

Pupil Lumens Per Watt: 150.80 Plm/W

Radiant Power: 3.904 W

Pupil Factor (Kp): 1.884

### Parámetros eléctricos

Voltage: 220.10V

Power Factor: 0.6090

Current: 0.1120A

Frequency: 60.00Hz

Power: 15.11W