

DOWNLIGHT

Características

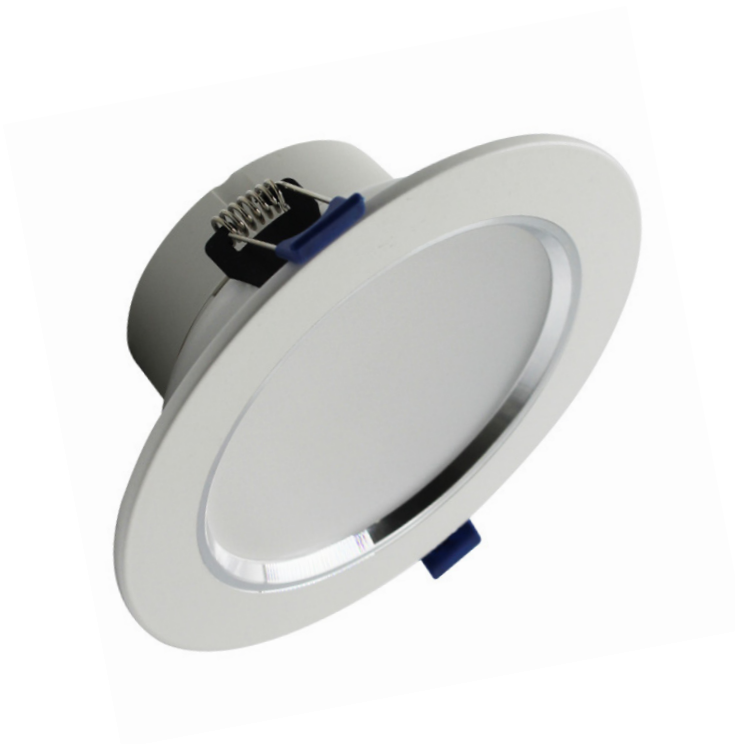
Material	AL
Terminado	Blanco
Pantalla	PC
Indice de protección	IP20
Base	Soporte de Fijación
Dimensiones mm	ø110*90*40 mm
Lúmenes	500 Lm
Temperatura	3,500K
Ángulo	120°

Parámetros Eléctricos

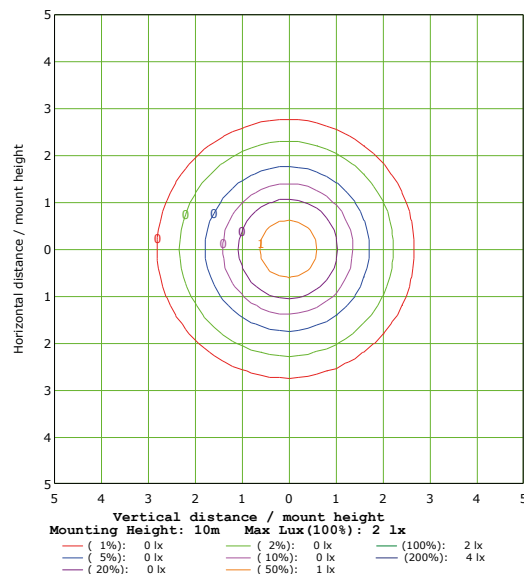
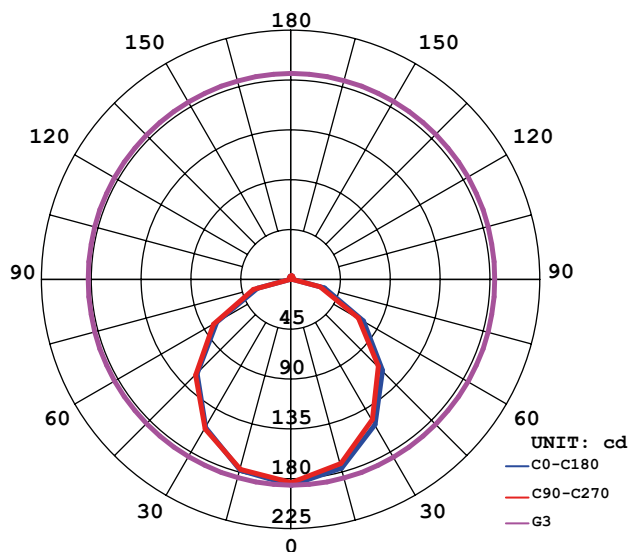
Tensión Nominal [V~]	85-265V~
Consumo de Potencia [W]	7W
Frecuencia Nominal [Hz]	50/60Hz
Consumo de Corriente [A]	0.08A
Temperatura de Operación	0 - 40 °C

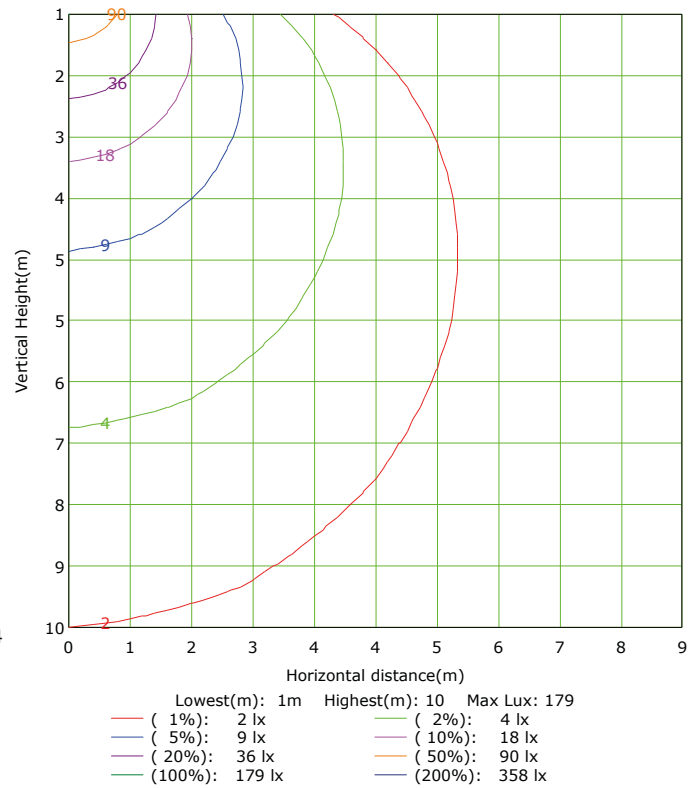
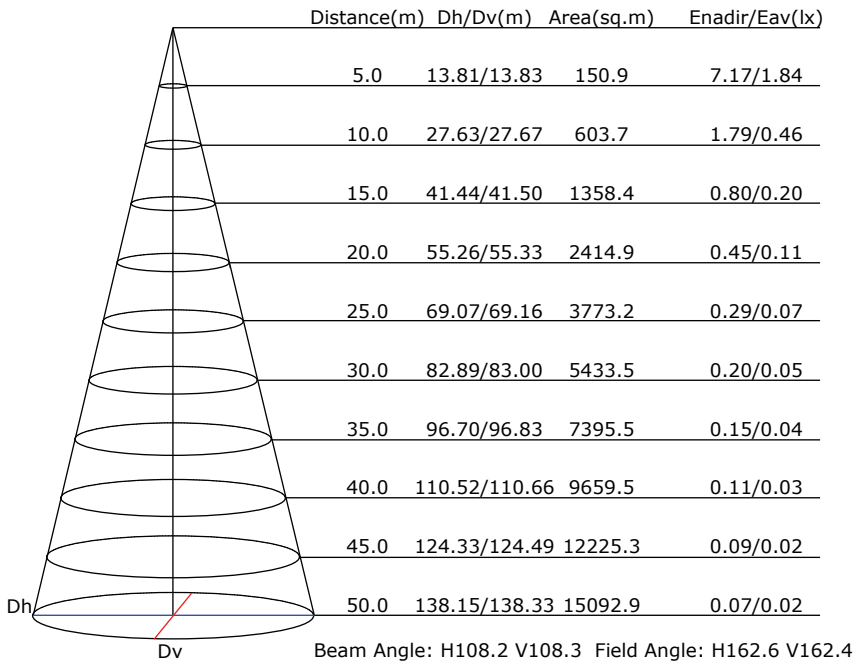
Beneficios

Garantía	2 Años de Garantía
Certificación	NOM ANCE

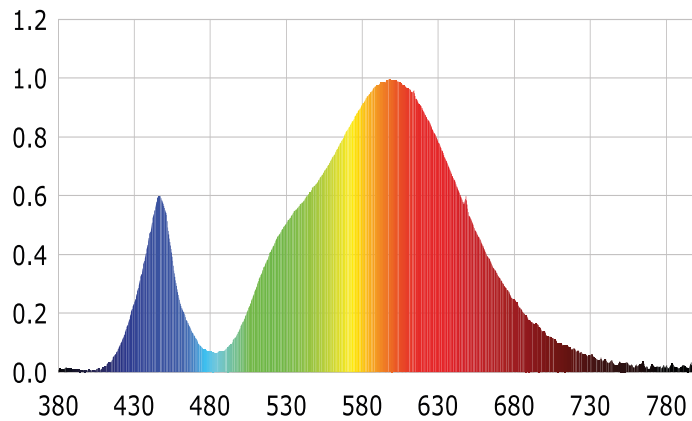
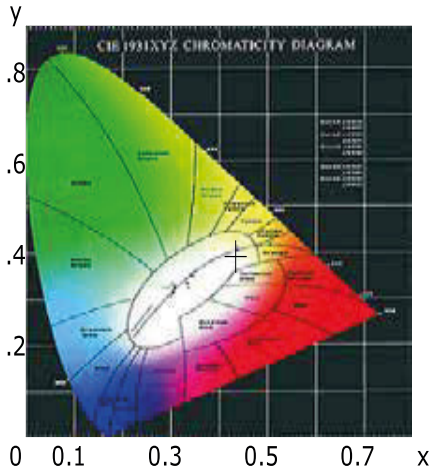


LUMINOUS INTENSITY DISTRIBUTION DIAGRAM





CIE1931 CHROMATICITY DIAGRAM



Parámetros colorimétricos

CCT: Tc=2943K (duv=0.00316)

CRI: Ra= 73.6, avgR(1~14)= 65.3, avgR(1~15)= 65.3

Parámetros fotométricos

Luminous Flux: 518.44 Lm

EEL: 0.16

Pupil Flux: 589.67 Plm

Efficiency: 71.12Lm/W

Energy Efficiency Class: A+ (EU 874-2012)

Pupil Lumens Per Watt: 80.89 Plm/W

Radiant Power: 1.539 W

Pupil Factor (Kp): 1.137

Parámetros eléctricos

Voltage: 127.30V

Power Factor: 0.5890

Current: 0.0970A

Frequency: 60.00Hz

Power: 7.29W