

PUNTA DE POSTE

Características

Material	FE
Terminado	Gris
Pantalla	Vidrio
Indice de protección	IP65
Base (poste)	3 Pulgadas
Dimensiones mm	450*523 mm
Lúmenes	8,000 Lm
Temperatura	6,500K
Fotocelda	Incluida

Parámetros Eléctricos

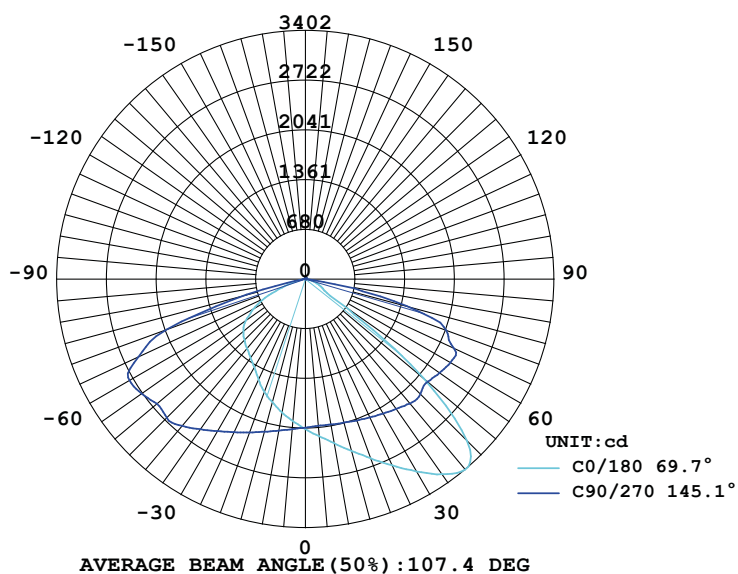
Tensión Nominal [V~]	100-277V~
Consumo de Potencia [W]	80W
Frecuencia Nominal [Hz]	50/60Hz
Consumo de Corriente [A]	1.50A
Temperatura de Operación	-5 a 45 °C

Beneficios

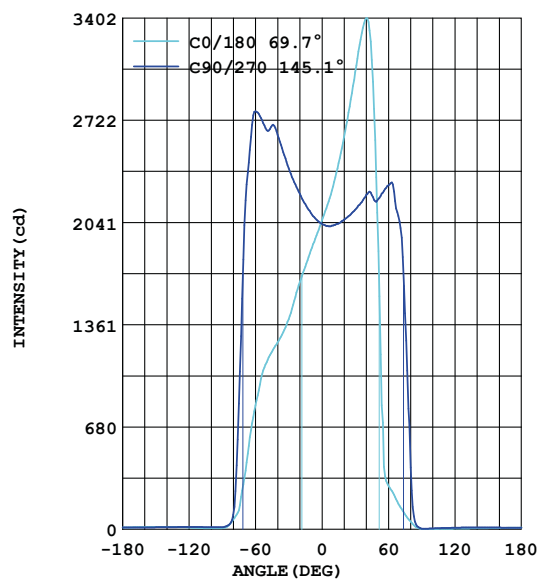
Garantía	3 Años de Garantía
Certificación	NOM ANCE

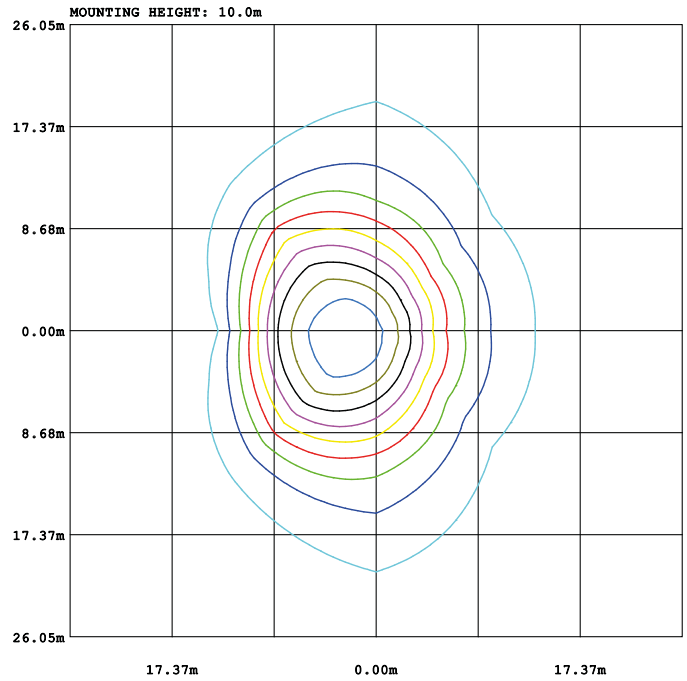
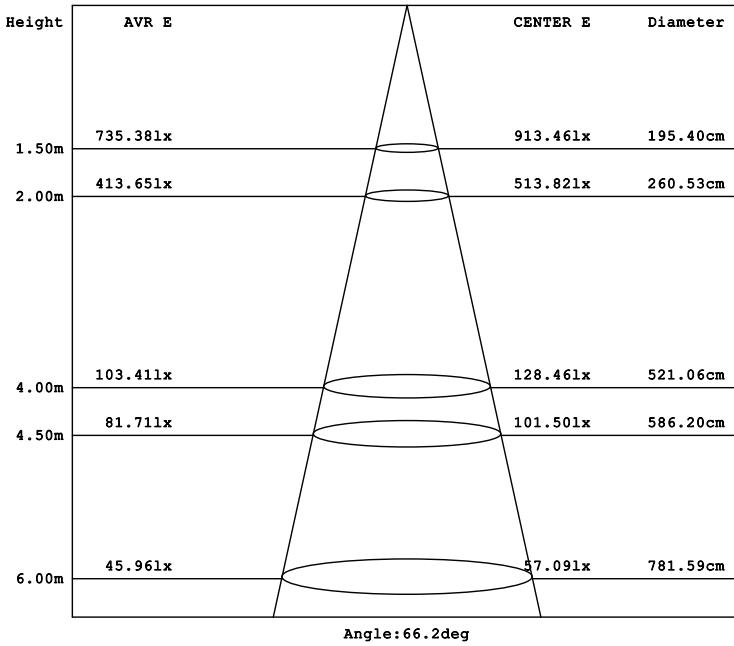


LUMINOUS INTENSITY DISTRIBUTION



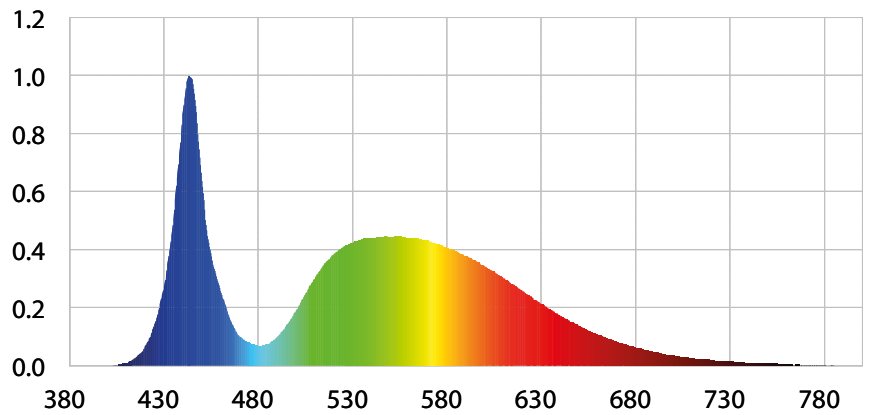
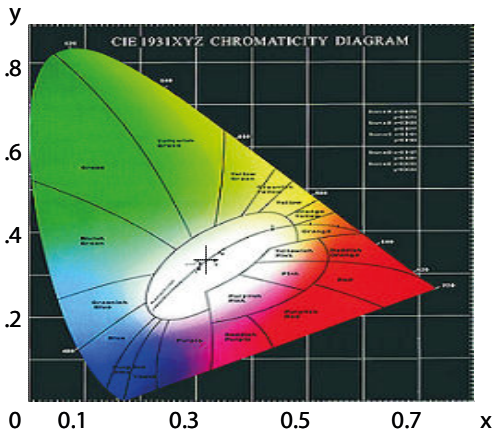
LUMINOUS INTENSITY DISTRIBUTION





- 10% 2.1951x
- 20% 4.3901x
- 30% 6.5851x
- 40% 8.7801x
- 50% 10.971x
- 60% 13.171x
- 70% 15.361x
- 80% 17.561x
- 90% 19.751x

CIE1931 CHROMATICITY DIAGRAM



Parámetros colorimétricos

CCT: Tc=6134K (duv=0.00523)

CRI: Ra= 70.0, avgR(1~14)= 59.4, avgR(1~15)= 59.7

Parámetros fotométricos

Luminous Flux: 7859.96 Lm

EEL: 0.15

Pupil Flux: 13165.36 Plm

Efficiency: 93.18 Lm/W

Energy Efficiency Class: A+ (EU 874-2012)

Pupil Lumens Per Watt: 156.08 Plm/W

Radiant Power: 24.018 W

Pupil Factor (Kp): 1.675

Parámetros eléctricos

Voltage: 126.80V

Power Factor: 0.9880

Current: 0.6720A

Frequency: 60.00Hz

Power: 84.35W