

REFLECTOR ALTA POTENCIA

Características

Material	Fe+Al
Terminado	Negro
Pantalla	Cristal
Indice de protección	IP65
Base	Soporte de Fijación
Dimensiones mm	137*117*40 mm
Lúmenes	2,000Lm
Temperatura	6,500K
Ángulo	120°

Parámetros Eléctricos

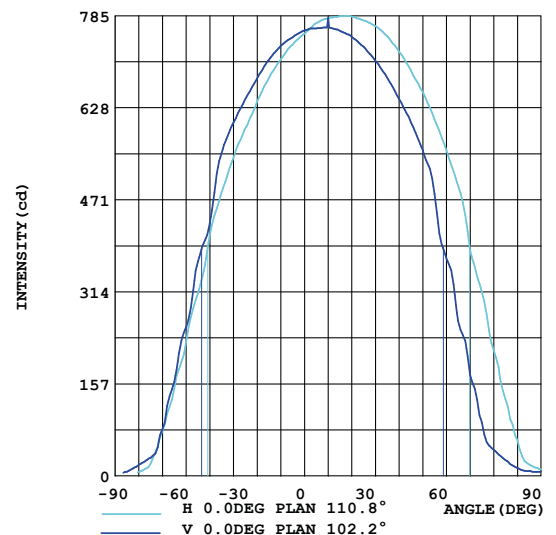
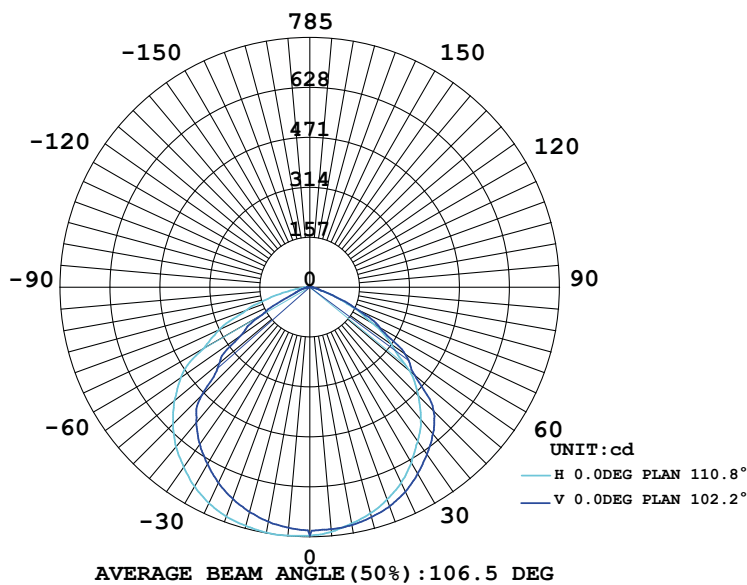
Tensión Nominal [V~]	85-305V~
Consumo de Potencia [W]	20W
Frecuencia Nominal [Hz]	50/60Hz
Consumo de Corriente [A]	0.23A
Temperatura de Operación	-5 a 45 °C

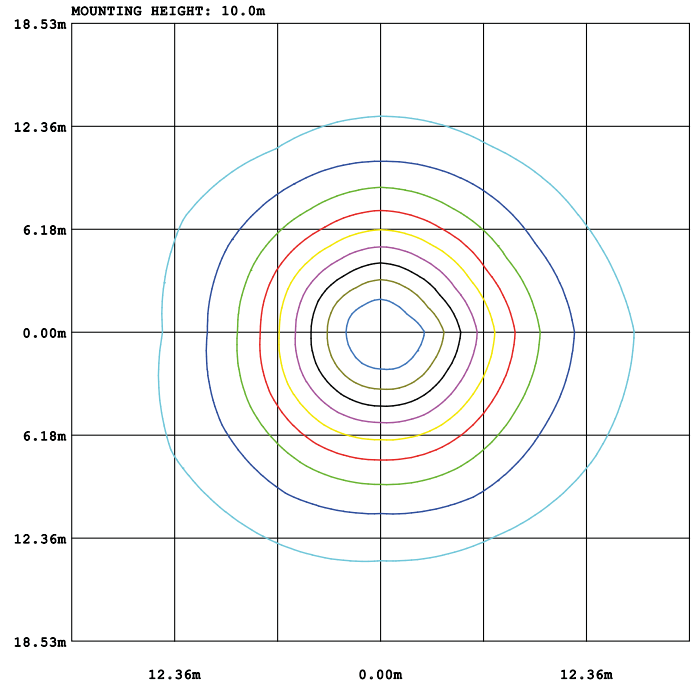
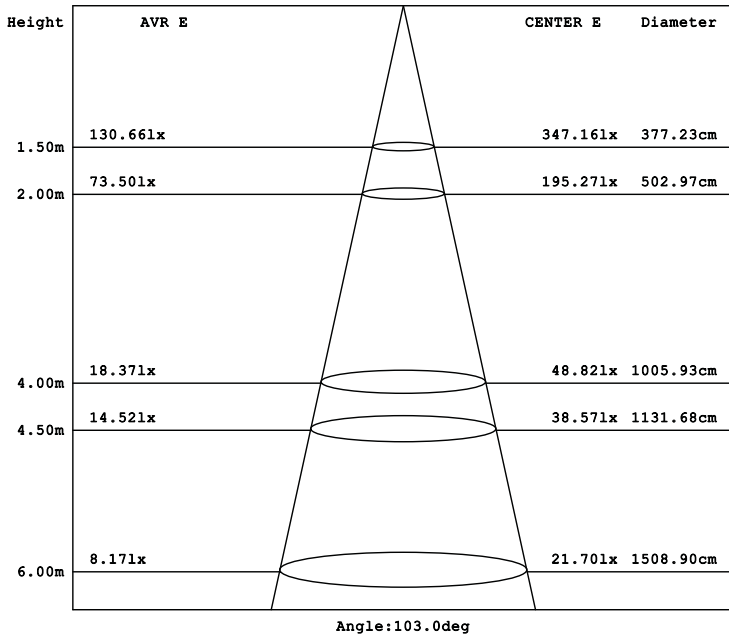
Beneficios

Garantía	3 Años de Garantía
Certificación	NOM ANCE



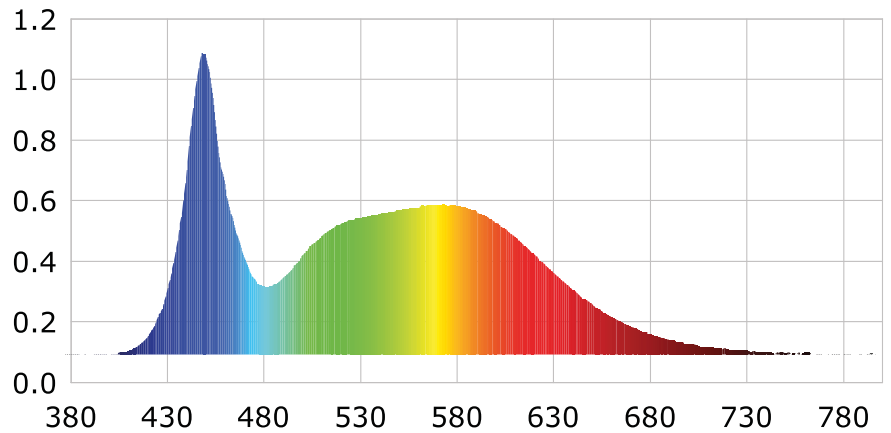
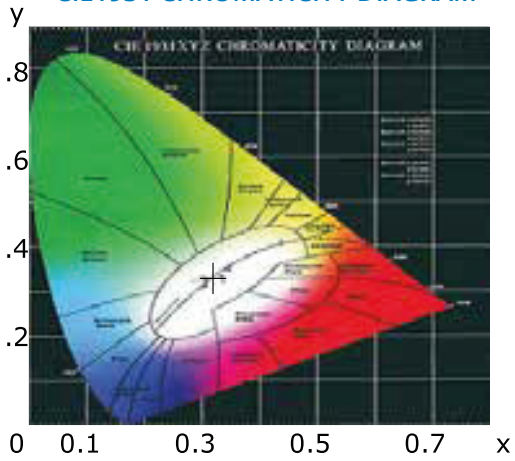
LUMINOUS INTENSITY DISTRIBUTION DIAGRAM





- 10% 0.78
- 20% 1.56
- 30% 2.34
- 40% 3.12
- 50% 3.90
- 60% 4.68
- 70% 5.46
- 80% 6.24
- 90% 7.02

CIE1931 CHROMATICITY DIAGRAM



Parámetros colorimétricos

CCT: Tc=6100K (duv=0.00088)

CRI: Ra=82.1, avgR(1~14)= 74.5, avgR(1~15)= 74.6

Parámetros fotométricos

Luminous Flux: 2043.43 Lm

EEL: 0.14

Pupil Flux: 3720.14 Plm

Efficiency: 95.76Lm/W

Energy Efficiency Class: A+ (EU 874-2012)

Pupil Lumens Per Watt: 174.33 Plm/W

Radiant Power: 6.488W

Pupil Factor (Kp): 1.821

Parámetros eléctricos

Voltage: 127.10V

Power Factor: 0.9830

Current: 0.1710A

Frequency: 60.00Hz

Power: 21.34W