

**WALL-PACK**

**Características**

Material	Al+PC
Terminado	Negro
Pantalla	PC
Indice de protección	IP65
Base	Soporte de Fijación
Dimensiones mm	318*240*195 mm
Lúmenes	12,000Lm
Temperatura	6,500K
Ángulo	120°

**Parámetros Eléctricos**

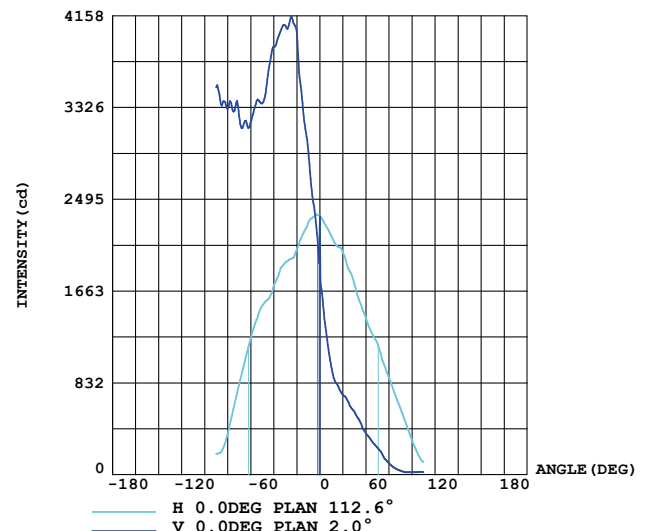
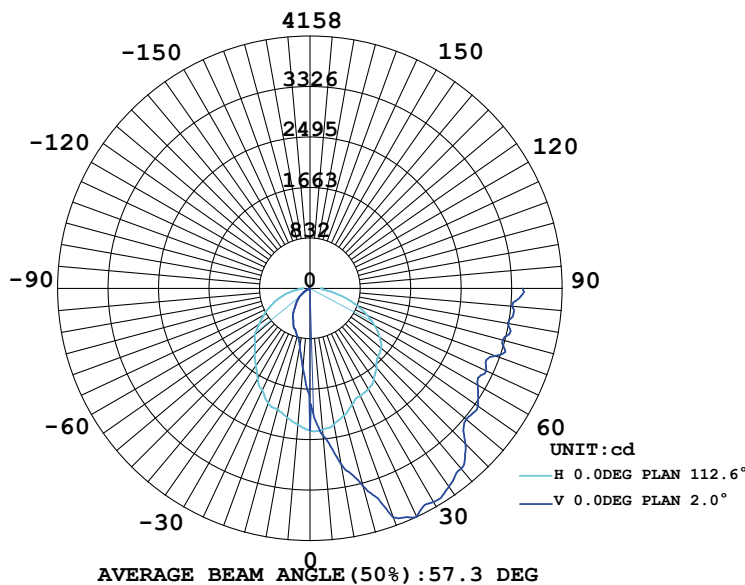
Tensión Nominal [V~]	100-305V~
Consumo de Potencia [W]	120W
Frecuencia Nominal [Hz]	50/60Hz
Consumo de Corriente [A]	1.20A
Temperatura de Operación	-5 a 45 °C

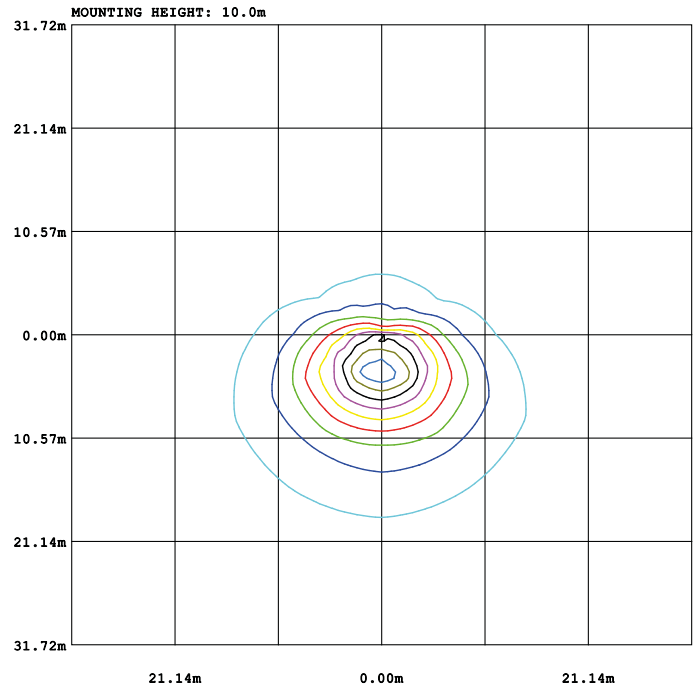
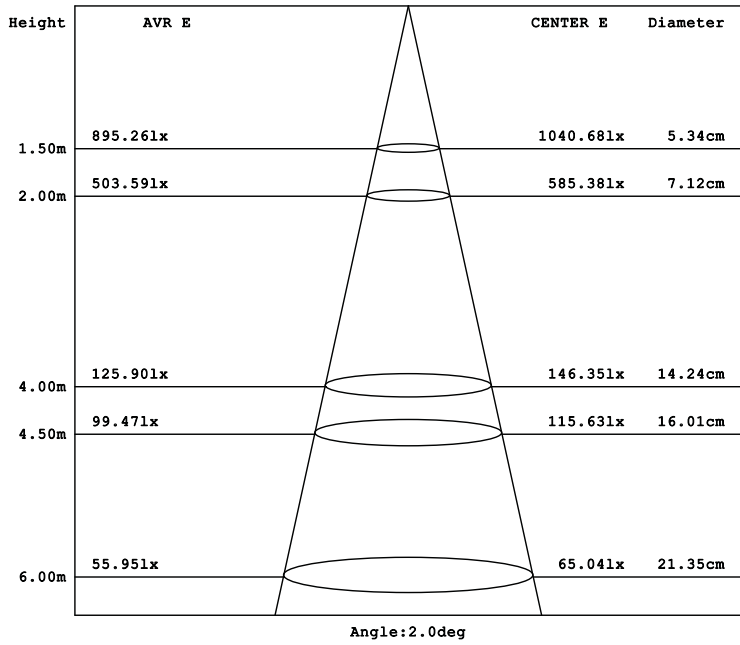
**Beneficios**

Garantía	3 Años de Garantía
Certificación	NOM ANCE



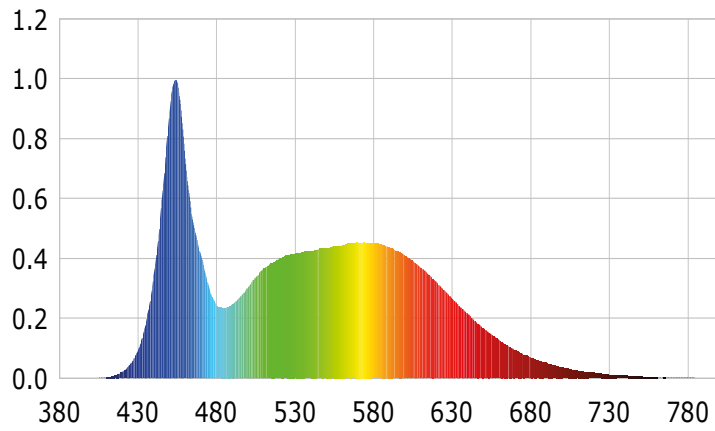
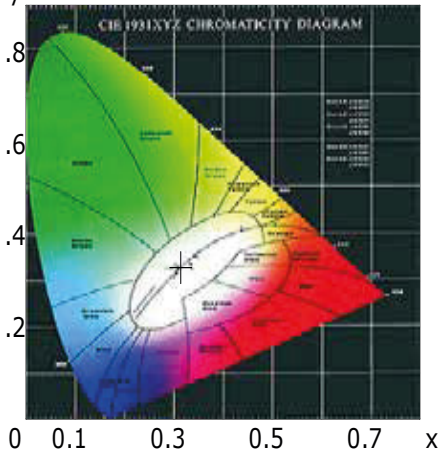
**LUMINOUS INTENSITY DISTRIBUTION DIAGRAM**





- 10% 3.3061x
- 20% 6.6121x
- 30% 9.9181x
- 40% 13.221x
- 50% 16.531x
- 60% 19.831x
- 70% 23.141x
- 80% 26.441x
- 90% 29.751x

## CIE1931 CHROMATICITY DIAGRAM



### Parámetros colorimétricos

CCT: Tc=6374K (duv=0.00226)

CRI: Ra=83.4, avgR(1~14)= 76.2, avgR(1~15)= 76.3

### Parámetros fotométricos

Luminous Flux: 12330.18 Lm

EEL: 0.14

Pupil Flux: 23186.46 Plm

Efficiency: 100.16Lm/W

Energy Efficiency Class: A+ (EU 874-2012)

Pupil Lumens Per Watt: 188.35 Plm/W

Radiant Power: 39.503W

Pupil Factor (Kp): 1.880

### Parámetros eléctricos

Voltage: 126.50V

Power Factor: 0.9970

Current: 0.9750A

Frequency: 60.00Hz

Power: 123.10W