

**WALL-PACK**

**Características**

Material	Al+PC
Terminado	Negro
Pantalla	PC
Indice de protección	IP65
Base	Soporte de Fijación
Dimensiones mm	318*240*195 mm
Lúmenes	6,000Lm
Temperatura	6,500K
Ángulo	120°

**Parámetros Eléctricos**

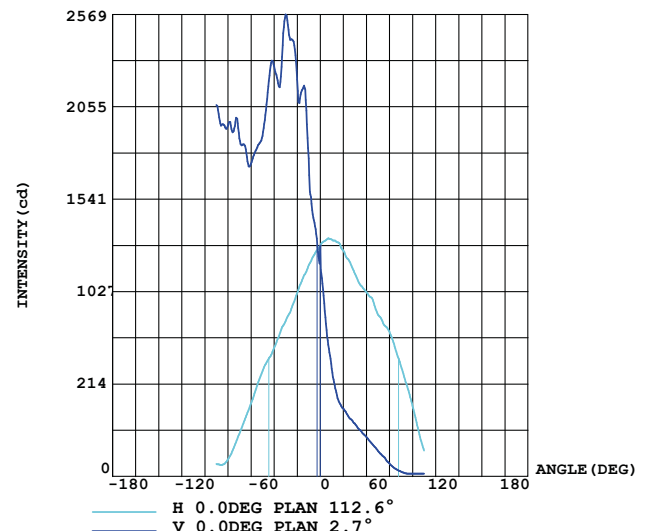
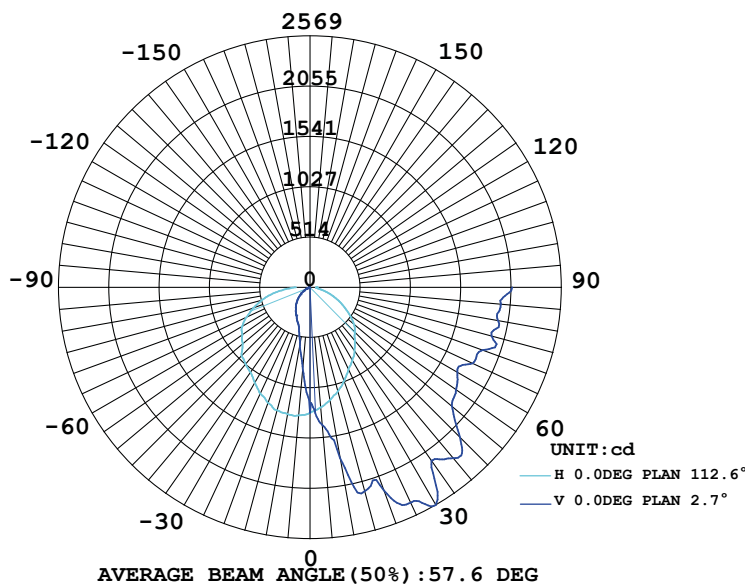
Tensión Nominal [V~]	100-305V~
Consumo de Potencia [W]	60W
Frecuencia Nominal [Hz]	50/60Hz
Consumo de Corriente [A]	0.60A
Temperatura de Operación	-5 a 45 °C

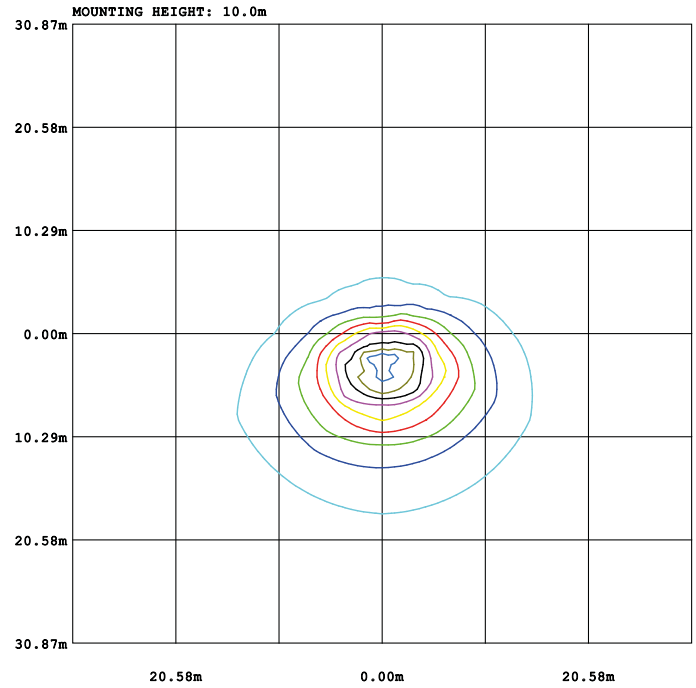
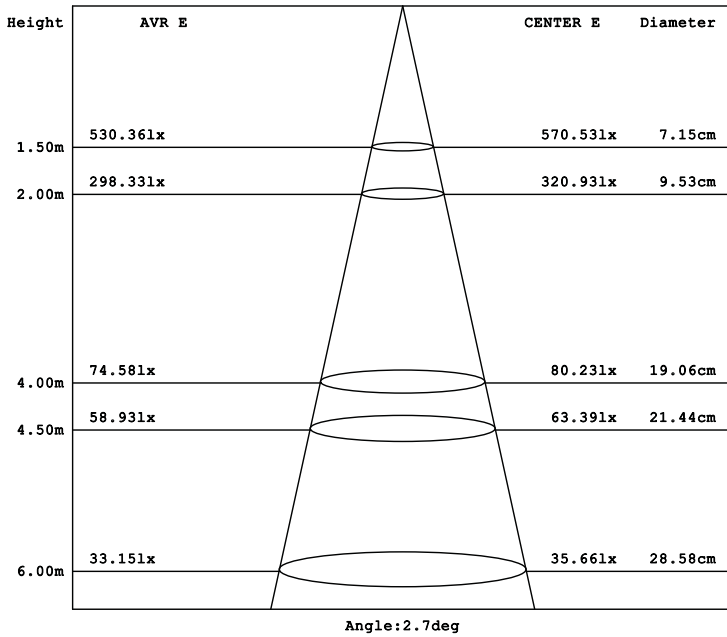
**Beneficios**

Garantía	3 Años de Garantía
Certificación	NOM ANCE



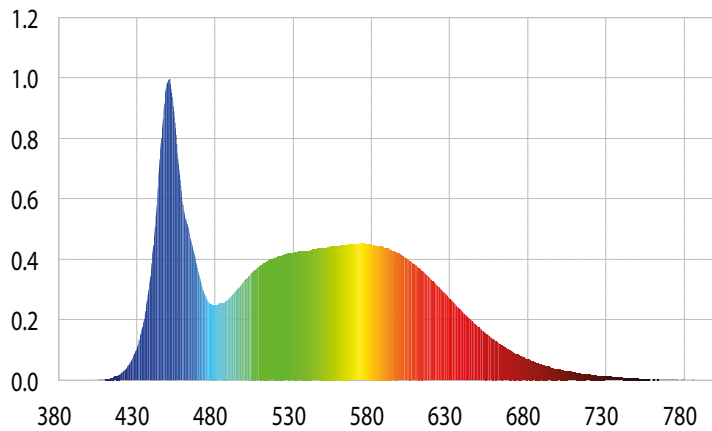
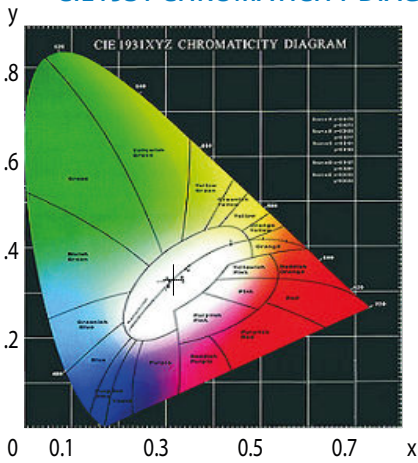
**LUMINOUS INTENSITY DISTRIBUTION DIAGRAM**





- 10% 1.9851x      — 40% 7.9401x      — 70% 13.891x
- 20% 3.9701x      — 50% 9.9261x      — 80% 15.881x
- 30% 5.9551x      — 60% 11.911x      — 90% 17.861x

## CIE1931 CHROMATICITY DIAGRAM



### Parámetros colorimétricos

CCT: Tc=6322K (duv=0.00316)

CRI: Ra=83.9, avgR(1~14)= 76.8, avgR(1~15)= 76.8

### Parámetros fotométricos

Luminous Flux: 5926.83 Lm

EEL: 0.13

Pupil Flux: 11119.18 Plm

Efficiency: 101.89Lm/W

Energy Efficiency Class: A+ (EU 874-2012)

Pupil Lumens Per Watt: 191.15 Plm/W

Radiant Power: 18.952W

Pupil Factor (Kp): 1.876

### Parámetros eléctricos

Voltage: 126.80V

Power Factor: 0.9940

Current: 0.4610A

Frequency: 60.00Hz

Power: 58.17W